

DRIVELINE

HiTEC[®] 6320

Automotive Gear Additive Package



For Light and Heavy Duty Automotive Axles

HiTEC® 6320 Automotive Gear Additive Package

For Light and Heavy Duty Automotive Axles

Key Performance Benefits

- Robust EP, antiwear and corrosion performance.
- Meet API GL-5 and GB 13895 performance for effective automotive gears protection.

Recommended Dosage

3.5% wt.	API GL-5, GB 13895, ZF TE-ML 07A, ZF TE-ML 08, MIL-L-2105D
1.4 - 1.8% wt.	API GL-4, ZF TE-ML 08

Contact your Afton Chemical representative for specific recommendations.

Typical Characteristics

Appearance	Orange Red Liquid
Specific Gravity @ 15.6/15.6°C	1.010
Kinematic Viscosity @ 100°C, cSt	2.2
Flash Point (PMCC), °C	76 min

Handling Information

Maximum handling temperature: 65°C
 Shelf life @ ambient: 24 months
 Recommended handling and storage temperature: ambient (15-40°C)

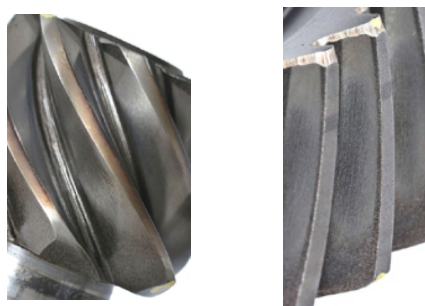
Robust EP, antiwear and corrosion performance

HiTEC® 6320 demonstrates robust EP, antiwear and corrosion performance as shown in L-42, L-37 and L-33-1 tests.

L-42 End of Test Inspection



L-37 End of Test Inspection



L-33-1 End of Test Inspection

